

United
Way



Greater Ottawa County
United Way



2019 IMPACT REPORT

OTTAWA COUNTY

Greater Ottawa County United Way supports, develops and implements a range of impact solutions that **improves lives** and creates **stronger communities**.



WHAT'S INSIDE

Impact in Ottawa County	3
Community Investment Fund	4
Advocate Spotlights	5
Lakeshore Housing Alliance	6
Volunteer Engagement	7
Volunteer Spotlights	8
Students in Our Community	9
Campaign Partners	10
Give/Donor Spotlight	11
Lighthouse Leadership/Spotlight	12-13
Thank You	14
Financial Report	15

Cover: Shape Corp. employees were featured in United Way advertising during August of 2018 as part of their Pinnacle Sponsorship. *Inside:* Volunteer groups from Huntington Bank and Macatawa Bank worked together to spruce up Sanctuary Woods.

MAKING AN IMPACT IN OTTAWA COUNTY

Impact from April 1, 2018 - March 31, 2019

-  **4,855 people** in Ottawa County were impacted by our funded **Education programs**
-  **26,165 people** in Ottawa County were impacted by our funded **Financial Stability and Basic Needs programs**
-  **23,913 people** in Ottawa County were impacted by our funded **Health programs**
-  **7,361 people** in Ottawa County were impacted by our funded **Housing programs**

62,294 people
in Ottawa County
were impacted by our funded programs and partnerships in the 2018-2019 fiscal year.

COMMUNITY INVESTMENT BY THE NUMBERS

50+
community investment volunteers

16
CI volunteers serving 10+ years

10
community investment panels

51
local nonprofit programs funded

38
agencies receiving funding

COMMUNITY INVESTMENT FUND

United Way's Community Investment Fund creates the building blocks for a better life for all by supporting **51 health and human service programs run by 38 local nonprofit agencies**. United Way also runs six internal programs, which address community needs.

EDUCATION

ARC – Advocacy & Resource Center

- › Supported Parenting

Boys & Girls Club of Greater Holland

- › Power Hour

Community Action House

- › EPIC (Empowering People In our Community)

Good Samaritan Ministries

- › Faith in Youth Americorps & Program

Grand Haven Area Community Foundation

- › TCAN College Advisor

Grand Haven Area Public Schools

- › Community CHILL

Hope College

- › CASA/Step Up
- › TRiO Upward Bound

Latin Americans United for Progress

- › Youth Leadership
- › Adult Education Services

Zeeland Public Schools

- › Zee Bus

FINANCIAL STABILITY/BASIC NEEDS

American Red Cross of West Michigan

- › Disaster Relief

Child Development Services of Ottawa County, Inc.

- › Affordable Day Care

Children's Advocacy Center

- › Assessment/Intervention

Community Access Line of the Lakeshore

- › 211

Community Action House

- › Stabilization Service - Ottawa County

Feeding America West Michigan

- › Mobile Food Pantries

Four Pointes Center for Successful Aging

- › Unmet Health Cost

Harvest Stand Ministries

- › Basic Needs

Legal Aid of Western Michigan

- › Free Civil Legal Services

Little Red House, The

- › Scholarships for Adult Day Care & Transportation

Love INC of Allendale

- › Transportation Assistance Program

People Center, The

- › Food Pantry

Ready for School

- › Preschool Access, Navigation, Tuition and Transportation Assistance

Resilience (Formerly CWIT)

- › Domestic Violence
- › Sexual Assault

Salvation Army, The (Grand Haven)

- › Emergency Social Services

HEALTH

Arbor Circle

- › Counseling & Supportive Services - Ottawa
- › Ottawa County Prevention

Association for the Blind & Visually Impaired

- › Blindness & Low Vision Rehabilitation - Ottawa

Big Brothers Big Sisters of the Lakeshore

- › Community Based Mentoring

Boy Scouts of America, President Ford Council

- › Comprehensive Youth Development

Children's Advocacy Center

- › Prevention

City on a Hill Ministries

- › Health Clinic

Girl Scouts of Michigan Shore to Shore

- › Leadership Experience

Grand Haven Department of Public Safety

- › TEAM (Teaching, Educating and Mentoring)

LEDA (Lakeshore Ethnic Diversity Alliance)

- › Calling All Colors
- › Migrant Mentoring

Mediation Services

- › Ottawa Child and Family Mediation

Mosaic Counseling (Formerly TCM Counseling)

- › Mental Health Counseling

NEO Forum (Northeast Ottawa Forum)

- › Education, Prevention and Treatment Services

NORA (Northwest Ottawa Recreation Authority)

- › Recreation Summer School

OAR (Ottagan Addictions Recovery)

- › Addiction Treatment & Recovery Support - Ottawa

Resilience (Formerly CWIT)

- › Prevention

Tri-Cities Family YMCA

- › Day Camp/ Child Care

HOUSING

Good Samaritan Ministries

- › Community Housing Partnership

Ladder Homes

- › Supportive Independent Living Housing

Legal Aid of Western Michigan

- › Free Housing Legal Services

People Center, The

- › Transitional Housing

Resilience (Formerly CWIT)

- › Supportive Housing

Salvation Army, The (Grand Haven)

- › Emergency Housing Assistance

UNITED WAY PROGRAMS

Greater Ottawa County United Way

- › Lakeshore Housing Alliance
- › Students LIVE UNITED
- › Ottawa County Volunteer Center
- › FamilyWise Prescription Assistance
- › My Free Taxes
- › My Smart Money

myfree
taxes.com

\$469K +

in refunds received by
Ottawa County residents
with MyFreeTaxes in 2018

\$398K +

amount saved by Ottawa
County on prescriptions
through FamilyWise in 2018

familywise®

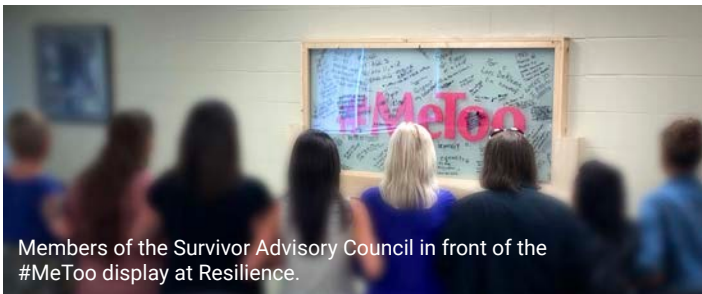
ADVOCATE SPOTLIGHT: JOHNNA STAAT

Johnna Staat has been an **advocate** in our community for more than 10 years as part of **United Way's Community Investment process**. "It's been fun and a learning experience," she said, "and it has provided the opportunity to build relationships and connections." Johnna also invests in the community by volunteering through work each September during United Way's annual Day of Caring event and giving back financially as a leadership donor.



Johnna grew up in the area and loves her community. She is a wife, mother and Talent Acquisition Manager at Mercantile Bank. When asked what keeps her coming back to give, advocate and volunteer with United Way, she said, "**I'm investing in a brighter future for all of us. I want to help ensure that the services are going to be there for those in need.**" She encourages others to get involved as well, "United Way offers the opportunity to support someone in helping others in whatever way they can."

COMMUNITY PARTNER ADVOCATE SPOTLIGHT: RESILIENCE



Members of the Survivor Advisory Council in front of the #MeToo display at Resilience.

Although their name has changed, the mission of **Resilience** (formerly Center for Women in Transition) hasn't: Respond to, reduce and prevent domestic and sexual violence. **Executive Director Beth Larsen** shared the process behind the name change, which involved stakeholders, including survivors themselves, "**Eliminating domestic and sexual violence in our community requires bold**

leadership. And while domestic and sexual violence still disproportionately impacts women, we do not believe it's exclusively a woman's issue to solve. We sought an identity that would invite men into our mission as allies walking alongside us in our efforts to end domestic and sexual violence."

Resilience offers services such as individual support, emergency shelter, supportive housing, legal advocacy and trauma therapy. In addition, they actively work with students through prevention programs such as Coaching Boys into Men, Athletes as Leaders, Girls on the Run and LIVERESPECT Coaching Healthy & Respectful Manhood. These programs provide opportunities for kids and teens to build character and learn about positive self-image and relationships.

In 2018, a **Survivor Advisory Council** was formed with nearly 30 survivors engaged. The Council gathers every other month to support one another and work for advocacy, policy change and accountability. Beth Larsen said, "Never before have the voices of survivors been more amplified in our organization." An active member of the Survivor Advisory Council said, "**Knowing you are safe; knowing you are seen, heard and supported; and knowing together we are making a difference for survivors, brings healing to oneself.**"



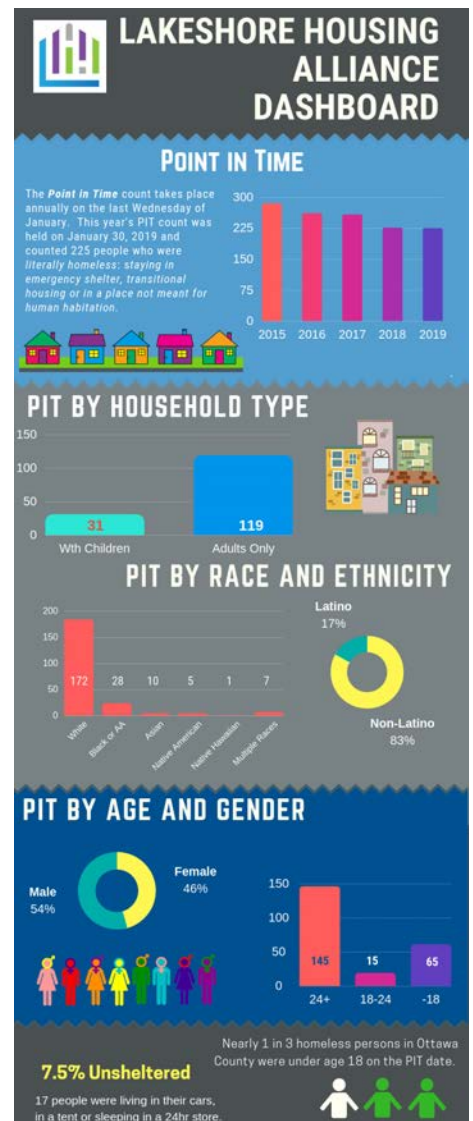
\$1.3 MILLION

in state & federal grants for homeless services received by Ottawa County and distributed through the Lakeshore Housing Alliance

The Lakeshore Housing Alliance (LHA), a program of United Way, is a collaborative group of 30 organizations and individuals dedicated to identifying needs, developing coordinated strategies and advocating for safe, accessible, affordable housing in Ottawa County. The LHA addresses the needs of persons experiencing homelessness by ensuring there are adequate resources available for those most in need.

MAKING AN IMPACT

- **Resilience** (formerly Center for Women in Transition) was awarded, through the annual HUD Continuum of Care funding competition, an additional **\$55,813 for homeless services to victims of domestic violence.**
- Community Action House (CAH) and First United Methodist Church of Holland (FUMC) have partnered to create **Refresh: Hygiene and Hope** which offers **free showers, mail service, and drop-in center** for people experiencing homelessness and housing instability.
- The Lakeshore Housing Alliance established the **Interagency Services Team (IST)**, a collaboration of homeless services providers with an inventory of permanent supportive housing or financial assistance to address the barriers facing those most in need of housing.
- Ottawa County was awarded an **additional \$10,000 in the 2018-2019 grant year** from the Michigan State Housing Development Authority by reaching performance incentives for the Emergency Solutions Grant.
- The Lakeshore Housing Alliance publishes a **bi-monthly dashboard** to educate the community about progress in ending homelessness. →
- Good Samaritan Ministries is leading the effort, with a **\$120,000 3-year grant from Housing Next**, to provide nonprofit property management services to landlords willing to partner with agencies providing rental assistance and permanent supportive housing to people in housing crisis.



VOLUNTEER ENGAGEMENT *In the 2018/2019 fiscal year*



Michelle Brothers and United Way's Liz DeLaLuz volunteered during Ottawa Connect in Oct. 2018.



United Way Relationship Managers removed invasive species and cleaned up the trails at Duncan Park during Day of Caring in Sept. 2018.

9,922
volunteers

107,375
volunteer hours

\$2,681,088
value of volunteer hours



Above left: Volunteers at Salvation Army provided more than 550 backpacks to local kids during the Stuff the Bus giveaway. *Above right:* Volunteers from DeLong and Brower helped remove invasive species from Ottawa County Parks during Day of Caring. *Below:* Health Pointe employees sorting books at the OAISD on Day of Caring.



DAY OF CARING | 9.20.18

- > 1,200+ volunteers
- > 45 projects in Ottawa County
- > \$211,900 in volunteer labor

VOLUNTEER SPOTLIGHT

CHRIS STRENG



Chris Steng at United Way's 2019 Celebration event

2019 Volunteer of the Year **Chris Steng** was born and raised in Grand Haven. He graduated from the United States Naval Academy, earned his commission as an Ensign in the United States Navy and received many honors during his service.

Chris currently gives back to the community by coaching youth soccer, giving blood through the Red Cross and serving in the following ways: as a **United Way Community Investment Panel Leader**, a Grand Haven Memorial Day Association Officer, a Chamber of Commerce Ambassador, a Folds of Honor Michigan Chapter, a member of Rotary Club of Grand Haven, Vice Chair of the YMCA, a Grand Haven Area Public Schools Board Trustee. He also co-chaired the Grand Haven Reimagine 2.0 community project with his wife, Kristi.



Above: A group from Haworth volunteered during Day of Caring in Sept. 2018. Below: Volunteers collected items for May Baskets.

BUSINESS VOLUNTEER SPOTLIGHT

HAWORTH

Haworth, Inc. has been a key supporter of Greater Ottawa County United Way throughout its history. They provide support in many ways by giving, advocating and volunteering.

Haworth consistently provides a large group of volunteers for United Way's annual Day of Caring event in September. In addition to its corporate support of United Way, individual Haworth associates have served and continue to serve on our **board of directors, community investment panels** and as **relationship managers**.

Haworth's commitment to the community is clear, and its support of volunteer engagement as an organization and among its associates is making an impact in Ottawa County and beyond.

JUNIOR DAY OF CARING



Students from Grand Haven Christian School volunteered at Junior Day of Caring in May 2019.

In April and May of 2019, nearly **1,000 students** from White Pines Intermediate School and Lakeshore Middle School in Grand Haven volunteered for **Junior Day of Caring**. Students volunteered at **25+ local nonprofit organizations and parks** during this time.



Students from Lakeshore Middle School volunteered their time at nonprofit organizations around the county during their Day of Caring in May.

STUDENTS LIVE UNITED *A program of Greater Ottawa County United Way*



Students Live United volunteers from Allendale, Spring Lake (left) and West Ottawa (right) helped local residents during Rake A Difference in Nov. 2018.



Alexa McVoy (left) of Grand Haven High School earned the Students Live United Award for volunteering the most hours during the 2018-2019 school year. She's pictured here at United Way's Celebration event with SLU Coordinator Jacquelyn Bennett.

United Way's **Students LIVE UNITED** program provides high school students in Ottawa County with the tools and support to locate volunteer opportunities, track their hours and earn recognition for their investment in our community.

400+ students were involved in SLU this year, and **10 seniors** received awards.

THANK YOU TO OUR CAMPAIGN PARTNERS

Top organizations exemplify year-round engagement, and are awarded for their impact in the areas of giving, advocating and volunteering. Award-winners are identified as: **Community Builder, Gold, Silver.**

A.D. Bos Vending Services
AAA Michigan
American Express
Anderson Technologies
Arbor Circle
Area Community Service
Employment & Training
AT&T
Automatic Spring Products Corporation
Bank of America
Barber Ford
Bekins Audio/Video & Appliance, Inc
Benteler Automotive
Border States Electric
Boy Scouts of America -
President Gerald R. Ford Council
Brilliance Audio, Inc.
Catholic Charities West Michigan
Challenge Manufacturing
Chemical Bank
Child Development Services
of Ottawa County
Children's Advocacy Center
City of Coopersville
City of Ferrysburg
City of Grand Haven
City of Holland
City of Zeeland
Comerica
Community Action House
Community Shores Bank
Consumers Credit Union
Consumers Energy
Coopersville Area Public Schools County of Ottawa
Dake/a JSJ Business
Davenport University
DeLong & Brower, P.C.
DeNooyer Chevrolet Inc.
Dryer Architectural Group
Elzinga Volkers
Employees of Holland Board of
Public Works
Entergy
Enterprise Rent A Car
Falcon Corporation
Farmers Insurance Group
Federal Express
Fifth Third Bank
First National Bank of Michigan

FirstEnergy Corp.
Flex
Gazelle Sports
General Electric
General Motors Corporation
GHSP/a JSJ Business
Girl Scouts Shore To Shore
Glik's
Global Technologies
Good Samaritan Ministries
Goodrich Quality Theaters
Gordon Food Service
Grand Haven Area Public Schools
Grand Haven Board of Light & Power
Grand Haven Custom Molding
Grand Valley State University
Great Lakes Castings LLC
Greater Ottawa County United Way
Haworth, Inc.
Health Pointe
Hekman Furniture
Herman Miller Cares
Herrick District Library
Holland Charter Township
Holland Hospital
Hope College
Horizon Bank
Howard Miller
Hudsonville Ice Cream
Hudsonville Public Schools
Huntington Bank
i'Move
IBM
Independent Bank
ITW Drawform
Jeanette Brownson Properties
John Deere
Johnson Controls
JP Morgan Chase
JSJ Corporation
Ladder Homes
Lake Michigan Credit Union
Legal Aid of Western Michigan
Lexmark
LightCorp
Loutit District Library
Macatawa Bank
Magna
Manpower
Meijer
Mercantile Bank of Michigan

Michigan Gas Utilities
Michigan West Coast Chamber
of Commerce
Mosaic Counseling (Formerly TCM
Counseling)
Nationwide
New Holland Brewing
Next Creative
North Ottawa Community Health
System
Northwestern Mutual
O'Reilly Auto Parts
ODL, Inc.
Ottagan Addictions Recovery, Inc.
*Ottawa Area Intermediate
School District*
PADNOS
Perrigo Company
Pfizer, Inc.
Plante & Moran, PLLC
PNC Bank
R & R Specialties
RealtyBianchi
Resilience (Formerly CWIT)
Ridgeview Industries
Robert W Baird & Co
ROL USA, Inc.
Russ' Restaurant
Rycenga Building Center
Ryder System, Inc.
SAF-Holland, Inc.
Schneider Transportation
Scholten Fant
Sekisui Polymer Innovations
Semco Energy, Inc.
Shape Corporation
Spartan Stores, Inc.
Spectrum Health

Thank you to our top two
campaign companies:

HAVUKI H



*Spectrum Health Zeeland
Community Hospital*
Spring Lake Public Schools
Spring Lake Township
Stanco Metal Products, Inc.
State Employees Charitable
Campaign
Target
Tennant Company
**The Chamber of Commerce -
Grand Haven, Spring Lake,
Ferrysburg**
The People Center
The Salvation Army, Grand Haven
Thermotron Industries Inc.
Trans-Matic Manufacturing Co.
Tri-Cities Family Y.M.C.A.
Underwriters Laboratory
United Federal Credit Union
United Health Group
United Parcel Service
Varnum Law
Walgreens
Walmart
Warner, Norcross & Judd
West Michigan Community Bank
West Michigan Molding, Inc.
West Ottawa Public Schools
Western Michigan Fleet Parts
Whirlpool Corporation
Woodward, Inc.
Zeeland Architectural
Components
Zeeland Farm Services
Zeeland Public Schools



Health Pointe employees had fun during their United Way campaign with a pie-in-the-face game.

DONOR SPOTLIGHT | FRANCO AND ALESSANDRA BIANCHI

Franco and Alessandra Bianchi moved from their native Italy to Michigan in February of 2002 for an executive position offered to Franco by Haworth Inc. Franco is currently the CEO and President of Haworth Inc., and the couple has embraced the local community and supported United Way since 2007.

In 2018, Alessandra launched **Realty Bianchi** (*working with Coldwell Banker Woodland Schmidt in Holland*), and she pledged her company's first profits to the **Ottawa County Leadership Challenge**. Thanks to Realty Bianchi's success, she was one of four donors who increased the county-wide challenge from \$80,000 to \$93,500 for the 2018-19 campaign year. The additional dollars were used to help United Way attract young leaders (*donors under 40 who give \$250-\$499*), matching their gifts up to \$500.



Franco and Alessandra Bianchi

"We have always supported the community where we live in different ways and taught our sons to be generous givers as well," said Alessandra. **"When United Way asked us to help encourage the next generation of leaders in Ottawa County, I was pleased to dedicate the results of my newly launched business to that worthwhile cause. The challenge also motivated me to work hard to reach that first goal."** The young leader challenge was a success... adding 99 new young leaders to the Lighthouse Leadership Circle. Their giving, advocating, and volunteering will form the foundation of Ottawa County's future.

CHALLENGE DOLLARS DEVELOP NEW GENERATION OF LEADERS

In 2018, the **Ottawa County Leadership Challenge** entered its third year with more dollars... and a new dimension designed to attract the next generation of community leaders (*those who donate \$500 or more to the annual campaign*). Thanks to four new donations to the challenge pool—from Don & Cindy Anderson, Alessandra Bianchi [*see story above*]; Jim & Donna Brooks and Mark & Lori Wilson—the **challenge grew to \$93,500** for the 2018-19 campaign. In addition to matching all new and increased leadership donations, the challenge "rounded up" to \$500 all gifts from people born in 1978 or after who gave between \$250 and \$499. As a result, we welcomed **99 new young leaders** to the Lighthouse Leadership Circle. In all, **670 leadership gifts** accounted for **\$906,320** of the total raised in the campaign ... and **\$149,066** came from new and increased leadership gifts.

\$2.07MIL

Raised during the 2018/2019
Annual Community Campaign

\$7.56 MIL

Community Benefit leveraged
by United Way

\$1=\$3.50

For every dollar donated, the
community receives \$3.50 in
Community Benefit

LIGHTHOUSE LEADERSHIP CIRCLE DONORS



BEACON SOCIETY \$10,000+

Franco & Alessandra Bianchi
& Realty Bianchi
Loutit Foundation
Tony Gage
Dick & Ethie Haworth
Matthew & Jennifer Haworth
Matthew & Jennifer Haworth
Family Advised Fund
Bari Johnson
Diane & Larry Kooiker
Steven & Sandra Moreland
Lynne Sherwood Fund for Greater
Ottawa County United Way of
Grand Haven Area Community
Foundation
Dr. & Mrs. Lowell Van De Riet
Gary Verplank
L. J. Verplank
Anonymous (1)

ADMIRAL'S CIRCLE \$5000-\$9,999

Shawn Baxter
Jeff & Tammy Beswick
James & Donna Brooks
David & Susan Couch
Pat & Kathy DeShaw
Keith & Mary De Witt
Martha Erickson
Happy Fox
Tom & Phippi Garrison
Phillip & Karen Groenhof
Mary Jacobson
Nelson & Lana Jacobson
Dorothy Johnson
Buzz & Lisa Miller
John Mooney
Joe & Dianne Patterson
Kyle & Samantha Verplank
Tony & Monica Verplank
Mark White
Anonymous (1)

CAPTAIN'S CIRCLE \$2,500-\$4,999

Glenn & Janaan Anderson
Don & Cindy Anderson
Karl & Tanya Chapel
Roberta J. Cramer & David R. Greer
Bob & Colette Volkema DeNooyer
Ann Harten
David & Pamela Klein
Scott & Stacey Lubbers
David Meekhof
Patrick & Stacy Moran
Jeff & Cindy Olds
John W and Ginny Reifel
P. J. & Kristen Thompson
Morey & Kris Wagenmaker
Mark and Lori Wilson
Donald & Sharon Wisner
Anonymous (3)

COMMANDER'S CIRCLE \$1,000-\$2,499

Kurtis Abraham
Michelle Adkins
Kevin Bailey
Scott & Tracy Bekins
Timothy Benningfield
Jason Birchmeier
Kevin & Lori Blanding

Jason Blubaugh
Lynn Blue
Linda & Steven Bovee
Cris Boon-Hinga & Marvin Hinga
Tom & Jane Bos
Tom & Laurie Bos
Arend Boterenbrood
Dr. Daniel & Deborah Bowen
Robert Brink
Jim & Joan Brown
Steve & Krystal Bultuis
Cheri & Ron Bultje
Brad and Denese Burrows
Julianne Carey
Paul & Tammy Christiansen
Michelle & Tom Creswell
Russell & Darla Crouse
Julie Daly
Lori DeBie
David & Nancy DeJonge
Dominique & Julie DeNooyer
Nicole DeNooyer & Chris Taylor
Ronald & Bonnie Dozeman
John Edlund
Stephanie Eller
James Elshoff
Deborah Erickson
Mark Eriks
John Evans
Marc Falcon
Daniel Faulkner
John Fegley
Mark & Debra Feyen
Bill & Darcy Fluharty
Jami Fox
Mr. Corey & Dr. Shelley Freimark
Joy Gaasch
Rob & Jill Garrison
Paul & Patricia Geick
John & Martha Gork
Ruth Grasman
Melvina Green
Jefra Groendyk
Ronald Haan
Peter Haines
Craig & Karen Hall
Edward & Nancy Hanenburg
Craig Hankinson
Brad Haverkamp
Kurt & Jayne Heringhausen
James Hilliard
Michael Hnatiuk
Frances Hogsten
Gregory Holmes
Brian Holmes
Marlene Holstine
Sandra Holzgen
Kerry & Mary Irons
Eric Jipp
Mark & Susan Johnson
Holly & Erick Johnson
Jerry & Debbie Johnston
Dan & Barbara Joldersma
Jim Jurries
Peter & Jeanene Kallio
Kelly Kean
Brian & Jennifer Kobi
Philip & Lillian Koning
Larry & Jeanie Koops
Mike Koppenol
Sandra Korfel
Randy & Sue Kortering
Kathy Kremer & Paul Schultz
Nicholas Kuhn
Jeff & Kelly Kurburski

Rob Langejans
Tim & Cindy Lawrence
Tina Marie Leeman
Matt & Wendy Leonard
Mike & Lindsey Lieto
Valerie & Ashley Livingston
Donna Jean Lock
Michael & Jamie MacPherson
Nicholas Marcinkowski
Debora Marshall
Brenda Marzynski
Susan Masri
Brooke McKinney
Mike & Renee Menke
Jason Meyer
Alan & Mary Miller
Phyllis & Darell Moreland
Paul Olesh
Jonathan & Shani Padnos
Peg & Jeff Padnos
Mitchell & Karen Padnos
Norman Payne
Norton & Patricia Peet
Timothy Pennings
Tina Pietrangelo
John Pimm
Rob & Cindy Pocock
Scott Poulton
Ron & Nancy Purcell
Bob & Andie Rander
Carolyn Raymond
Tom & Gretchen Reinsma
Cathy Renn-Bowers
Jonathan & Phyllis Rietberg
Tom & Tracy Robbins
Michelle Robinson
Fred & Lynn Rutan
Peter & Gordeen Sherwood
Lisa Shipp
Johnna & Travis Staat
James & Sheila Steffel
Bruce Stewart
Gregory Stroh
Bridget Marie Tremaine
Anita Tucker
Barbara VanHeest
Michael & Lisa VanOmmen
Ben VanSlooten
Henry & Cora Visscher
Christopher Walcott
Jill Walcott
Alice Webb Endowment Fund of
the Community Foundation of
the Holland/Zeeland Area
Cheryl Weeks
Cynthia Welton
Gary Werkman
Henry & Louann Werksma
Dennis Wiegand
James Wiersma
Michael & Penny Zacek
Sheryl Zajechowski
Anonymous (12)

NAVIGATOR'S CIRCLE \$500-\$999

Laura Aiken
Ken & Annette Allen
Kurtis Andree
Todd Armstrong
Kathleen Avery
Steve & Deb Ball
Kerrie Barney
Andrea Barry
Hugh Bartels

Beth Bawden
Lola Beasley
Paula & Heath Bedford
Anna Bednarek & James Smothers
Matthew Belluomini
Kevin & Barbara Berko
Craig Bessinger
Amanda Betts
Kelli Beyer
Michael Bialowas
Terry Billman
James Bishop
Kerri Bonney
Eric Boonstra
Terri Bos
Jamie & Naomi Bosch
Kimberly Bosch
John Bouws
James Bowden
Iselle Bracely
Adam Briggs
Heather Brolick
Tyler Brotherton
Kerry Brozyna
Mark Burr
Susan Butler
Marlene Byers
Jody Cain
Kellie Carlson
Duane Carpenter
Bob & Karen Chapel
Susan Cherry
Letha Childress
Cassie Cihos
Keith Clement
Robert Cloutier
Mr. & Mrs. Matt Coleman
Cathy Collins
Timothy Conroy
Larry & Connie Corriveau
Rob Crane
Cathleen Cunningham
Steven Curtis
Joe & Lisa Danicek
Aaron & Angeline Dean
Ryan DeBoer
Joseph DeGraves
Kelly Dekker
Liz DeLaLuz
Ivan Denson & Chantel Jones-Denson
Cheryl Devereaux
Elizabeth Dietrich
Jerry & Diane Di Trapani
Rhonda Dittman
David Dora & Tammera Harmsen
Josh Dove & Crystal Pickard
Charles Dreyer
Jeffrey Edewaard
Dakota Edwards
Sherry Egan
Thomas Eggebeen
Candice Epperly
Joshua Erb
Jon Eslick
Jamie Espinoza
William & Elaine Evenson
Steve & Mary Jane Evink
Bert Fairchild
Kristen Farmer
Natalie Fedewa
Peter Feldpausch
Yvette Fontaine
Paul & Beth Foulkes
James Fraley
Kevin & Gina Gancarz
Cheryl Garrison
David Geick
Joanne Gibson
Scott & Wendy Glasgow
Jacob & Kristen Glick
Timothy Gort
Lisa Greenwood
Karen & Mitch Grissen
Scott Groenheide
Cara Guzman
Brent & Laura Hadden

Morgan Hailstone
Randall L. & Therese A. Hansen
Mark Harder
Gerald Hardison
Dale Harken
Alan Hayen
Connie Hecksel
Robert Hendrickson
Gregory Herda
Jack Hessler
Elizabeth Higgins
Barbara Hill
Antonio Hinojosa
Matthew Hoeksema
Bruce Hoeve
Jon & Richelle Hofman
Steven Homrich
Amy Hosford
Hillary Hovinga
Thomas Howell
David Huisman
Paul & Sandy Huber
Angela Hupcik
Andrew Ingal
Daniel Jablonski
Brandee Jackson
Joseph James
Hannah James
Cathy Johnson
Ron Johnson
Charlene Johnson
Jeremy & Stacey Johnston
Roger & Susan Jonas
Kirsti Jones
Brian Kadwell
James Kalinosky
Jimmie & Melissa Liggins
Marina Karasselios
Adam Kelly
Ethan Kelly
David & Sandra Klaassen
Peter Klahorst
Amanda & Timothy Klinger
Julie Koning
Joani Kooiker
Sharon Kopka
Del & Bonnie Krueger
Janet Laing
Derrick Lamy
Michael Lawson
Steve Lawson
Fei Lee
Christopher LeFaive
Staci LeFurge
Jared LeMaire
Ashlyn Lemieux
Ben & Sarah Lewakowski
Myron Lewis
Jim & Sarah Lilly
Ashley & Valerie Livingston
Bud & Mary Lothschutz
Nathan Lowery
Gwen Luban
David Lumm
Shirley Lynema
Peter Mack
Mae Mackenzie
Angelo & Laura Marasco
Thomas Martin
Daniel & Wynne Martin
Greg & Kate Maybury
Fred McClellan
Paul McCormick
Kevin Meagher
Thomas Meeuwsen
Bob Merrill
Fred & Terri Meyer
Phillip & Gloria Meyer
Tamara Milobinski
Jose & Diana Mireles
Julie Mitchell
Cindy & Eric Moe
Renee Molyneux
Steven Morales
Jonathan Mulder
Haans & Anita Mulder



4-STAR CHARITY NAVIGATOR RATING RECEIVED

Greater Ottawa County United Way is rated as a Four Star Charity by Charity Navigator. This is the highest rating a charity can receive and means the charity exceeds industry standards and outperforms most charities in its cause.

DONOR SPOTLIGHT | CONSUMERS ENERGY

At United Way's annual LIVE UNITED Celebration event in March, **Consumers Energy** was presented with the **G.W. Haworth Strength of the Community Award**. This "lifetime achievement award" recognizes an organization, family, couple, or individual that exemplifies United Way's leadership spirit of volunteering, philanthropy and community decision-making.

Consumers Energy is Michigan's largest energy provider, and serves more than 75,000 homes and businesses in Ottawa County. **Their company, foundation, employees and retirees provided over \$125,000 to nonprofit organizations in Ottawa County last year.** They also volunteer in the communities they serve, including United Way's Day of Caring and Stuff the Bus Backpack and School Supply Drive. Consumers Energy believes strongly in United Way's impact work throughout the state. In 2018, Consumers' employees, retirees, company and foundation contributed nearly \$1 million to support United Ways in Michigan.



John Broschak, Carolyn Bloodworth and Nathan Hoffman from Consumers Energy display their G.W. Strength of the Community Award.

Sam Mulliken
Sylvia Munoz
Austin Nagelkirk
Scott Navarre
Brad Northman
Amanda Norton-Price
Mike & Liz Novakoski
Susan Nunez-McMahon
Greg & Jeanine Taghan-Oleszczuk
James & Ruthann Olthoff
Brian Oxley
Shelley Padnos & Carol Sarosik
Mark Pakkala
Tia Paquin
Philip & Chris Pearce
Brian Pepera
Mark & Amy Pereira
Amanda Perez
Jeffrey & Karen Piper
Stewart Pitz
Tim & Demera Platt
Dana & Joseph Plowman
Tracy Plummer
Craig & Coreen Porter
Lyndsie Post
Jane Posthumus
Michelle Priest
Daniel Prowant
Joseph Puls
Wayne & Linda Pynnonen
Amy Quarry
John & Ann Query
Aimee Radulovich
Robert & Lori Rander
Chuck & Nena Rantz
Delayne Reeves
Scott & Mary Remenschneider
Jennifer Remondino
Larry Ridge
Kenneth & Elaine Riebe
Mary Rigterink
Angela Riksen
Thomas Rizzi
Dr. & Mrs. M. Gary Robertson
Lori Rosema
Bruce & Fran Rosensteel
Raymond Rosloniec
Rebecca Ruiters
Scott Ruiters
Stacie Rumsey
Dennis Rupar
Heather Russell
Stacy Russell

Patrick Ryskamp
Rick Schaap
Linda Schaltz
Brian Schebor
Joel Schlukibir
Peter & Teresa Schraudt
Duane Schuldt
Robert & Theresa Seaberg
Mark Seefried
James Sees
Izzy & Sylvia Segovia
Kelly Selk
Leah Shaw
Mike & Amy Sheridan
Thomas Shreeve
Julia Siegel
C.E. Sikkenga
Kevin Simpson
Barbara Skendrovic
Joseph Skirnski
Rick Skorupski
James Smedley
Alice-Jo Smith
Aaron Smith
James Smither
Deborah Snyder
Jeffrey Sotok
Andrea Spagnuolo
Laura Stahl
Marcus & Barbara Starbuck
Kate Stoetznier
Kim Stone
Robert & Ruth Stoppert
Dan & Holly Streng
Douglas & Kelly Suchecki
Paul Surya
June Swart
Jon Swets
Bryan Swiftney
Aida Tanaka
Bobbi & Jeff Tayler
DeQuarius Taylor
Mikalee Tazelaar
Henry Teasley
Robert Terpstra
Mark & Kay Teska
Rex Thelen
Thomas & Rhonda Thompson
Paul Thurman
James Todd
Paul & Ione Trap
Chris Tremain
Dolores Trese & Dan Bonner

Wendy Trethewey
Joshua Troast
Ryan Turner
Nathan & Courtnie Turpin
Mike & Sandy Updegraff
Alice Urban
Keith & Dillene Van Beek
John Van Dyke
Daniel Van Huis
Louis Van Raalte
Jon VanAllsburg
Thomas Vanderby
Jacob Vanderploeg
Justine VanderZwaag
Jeff & Joan VanFossan
Joseph VanLinden
Richard & Amy Veenhoven
Ken & Pat Verduin
Renee Visser
Cassandra Volkers
John Waanders
Amy Walderzak-Kayser
Ron & Sue Wallish
David Walters
Rachelle Warrick
Jim & Mary Kay Wemple
Thomas Westenbroek
Robert & Helen Weykamp
Glynis Whitcomb
Kevin Wicking
Charles Wickey
Richard Wiegand
David & Susan Wikstrom
Deanna Winegar
Gerald Winkler
Steve & Laurie Woodcock
Robert Worthington
Roxanna Yager
Michael Yates
Barbie Young
Rodney & Tina Zellman
John Zerfas
Jan & Dave Zessin
Steve Zimmer
Rosemary Zink
Daniel Zona
Anonymous (33)

YOUNG LEADERS CIRCLE
\$250-\$499 (under 40 yrs)
Graham Babcock
Maggie Baker
Melissa Beall

Michael Beck
Joel Berglund
Jessica Bloor
Paden Brandel
Luke Bruce
Jennifer Bryant
Erin Buehler
Regena Bull
Devon Burns
Jonathan Califf
Molly Carmer
Brian Christoffer
Patrick Cisler
Terrence Coleman
James Cook
Stephanie Cowan
Amber Craymer
David Edwards
Alison El-Cassabgui
Jennifer Eller
Benjamin Frye
Christopher Fuhrman
Mark Galy
Levi Gates
Nathaniel Gee
Cody Gillette
Lisa Goldsborough
Martin Gonzalez-Ranyel
Michael Goorhouse
Franklin Gries
Leah Gussenbauer
Jennifer Gutierrez
Kerri Guzman
Megan Hagerty
Sequoia Hardy
Corey Harris
Chris Hazlett
Gretchen Hensler
David Herman
Joshua Hooker
Carla Hubbs
Kurtis Hulst
Megan Hunter
Sarah Jackson
Kyle Jackson
Kathryn Johnson
Michael Johnson
Erin Kamphuis
Joshua Kersting
John Koetsier
Katrina Lee
Heather Lee
Matthew Leigh

Josh Luther
Steven McCarty
Samantha McKinnon
John McLemore
Reyna Mendoza
Derek Morgan
Christopher Murray
Leandra Naerebout
Andrea Nauta
Lacey Nelson
Mary Nowlan
Trisha Nutt
Bridgette Oakes
Stephen Osterhart
Sean Parker
Emily Peterson
Jessica Ras
Carolyn Reuschel
Jessi Reuwer
Khrystine Rice
Steven Robb
Ted Rotzell
Amanda Rowe
Andrew Rysdam
Megan Sheehan
Andrea Smith
Ashley Step
Jason Stoike
Joseph Sturgill
Corey Thomas
Jeff Thompson
Delaney Torrey
Nathan Turpin
Justina Uganski
Nicholas Vanderwest
Jack Wagner
Randall Waldie
Kerwin Warneke
Nicholas Watt
Martin Woessner
Ashley Woodruff
Matthew Wymer

Please let us know if we omitted your name from this list by contacting Louann Werksma at lwerksma@ottawaway.org or call 616.396.7811.

THANK YOU TO OUR 2018/2019 VOLUNTEERS

BOARD OF DIRECTORS

Michael MacPherson, Huntington Bank, *Chair*
Keith Van Beek, City of Holland, *Vice Chair*
Deborah Erickson, Fifth Third Bank, *Treasurer*
Kevin Hook, Community Member, *Secretary*
Lyndsie Post, DWH, LLC, *At-Large*
Jim Bachmeier, Grand Valley State University
Anna Bednarek, Community Mental Health of Ottawa County
Brent Hadden, Coopersville Area Public Schools
Pete Haines, Ottawa Area Intermediate School District
Frances Hogsten, Haworth, Inc.
Mike Lieto, Shape Corporation
Melissa Kamara Liggins, Spectrum Health
Rhonda Thompson, JSJ Corporation

FINANCE COMMITTEE

Deborah Erickson, Fifth Third Bank, *Chair*
Michael MacPherson, Huntington Bank
Bob Rander, Community Representative

COMMUNITY IMPACT COMMITTEE

Deborah Erickson, Fifth Third Bank, *Chair*
Anna Bednarek, Community Mental Health of Ottawa County
Patrick Cisler, Lakeshore Nonprofit Alliance/Community SPOKE
Brent Hadden, Coopersville Area Public Schools
Jeanene Kallio, Trans-Matic Mfg. Co., Inc.
Rhonda Dittman, Hudsonville Ice Cream
Sarah Lewakowski, Mosaic Counseling

LAKESHORE HOUSING ALLIANCE EXECUTIVE COMMITTEE

Anna Bednarek, Community Mental Health of Ottawa County, *Co-Chair*
Jennifer Boerman, *Co-Chair*
Julie Cnossen, Arbor Circle
Laura Driscoll, Good Samaritan Ministries
Paula Huyser, Ottawa County Community Action Agency
Liz Keegan, Fair Housing Center of West Michigan
Beth Larsen, Resilience
Kendra Spanjer, Dept. of Health and Human Services
Laura Driscoll, Good Samaritan Ministries
Stacy Pacanowski, HHI Management

VOLUNTEER CAMPAIGN ACCOUNT MANAGERS

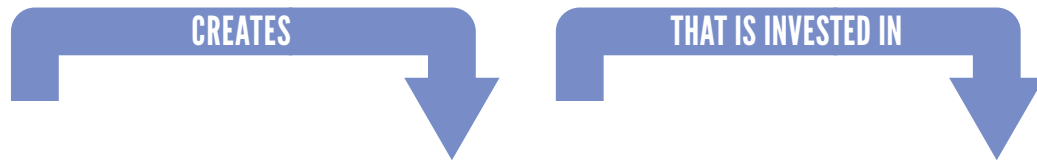
Wayne DeBruyn, CFP, Wealth Advisor, Hilliard Lyons
John Gork, Financial Representative, Northwestern Mutual Financial Network
Bill Hamilton, Community Representative
Frank Kennedy, Community Representative
Jerry Morlock, Director of Business Development, Axios HR/Staffing Inc.
Kevin O'Keefe, Banking Center Manager, Chemical Bank
Rick Schaap, Community Representative
Stacey Workman, Financial Advisor, Edward Jones Investments
Erin Zylman, Financial Advisor, Edward Jones Investments

VOLUNTEER ADVISORY TEAM

Anna Bednarek, Community Mental Health of Ottawa County
Sherry Martens, Resilience

2018/2019 FINANCIAL REPORT

Fiscal Year April 1, 2018 – March 31, 2019



EXPENSES	REVENUE FOR COMMUNITY IMPACT	COMMUNITY BENEFIT
UNITED WAY OPERATION:	Campaign	TOTAL \$ INVESTED IN CB PROGRAMS
Administration*	Sponsorship/Other	Partner Program Investment
Fundraising	Grants	Collaborative/Initiative Investment
TOTAL	Investment Income	UW Community Impact Programs**
	TOTAL	TOTAL
UW COMMUNITY IMPACT PROGRAMS:		TOTAL IN-KIND BENEFIT TO COMMUNITY
Volunteer Center		Value of UW Volunteerism
Impact Programs		In-kind Agency Support***
Students Live United		TOTAL
Lakeshore Housing Alliance		
Housing Initiative Fund		TOTAL \$ LEVERAGED INTO COMMUNITY THROUGH UNITED WAY
TOTAL		Dollars Leveraged/Matched****
		UW Stability Programs
		TOTAL
		TOTAL COMMUNITY BENEFIT

*Includes the cost of administration of Allegan County United Way partnership.
 **Several United Way programs that had previously been funded as initiatives were reclassified as program in our budget and audit. These programs now show as Operational Expenses in the IRS auditing model. They are, however, Community Impact programs.
 ***Value of services received by community partners at no charge.
 ****Dollars/grants that are generated by United Way, and invested directly into community or given to community programs because of United Way's investment in that program.

RETURN ON INVESTMENT

- For every \$1 we raise through campaign we create \$3.50 in Community Benefit
- United Way's total Community Benefit for the 2018/2019 fiscal year was \$7.56 million



Leadership donors enjoyed the Lighthouse Leadership Circle appreciation event in Sept. 2018. See pages 12-13 for the full list of leadership donors.

THANK YOU

2018-2019 CAMPAIGN SPONSORS

PINNACLE



THINKERS.
BELIEVERS.
DOERS.

PLATINUM



HAWORTH®



worksighted



JOHNNY Advertising
www.johnnyadvertising.com 1-888-704-JOHN

GOLD



SILVER

City Flats Hotel Fox 17 PADNOS
ITEX / West MI Barter Co., Inc. Varnum Law



Haworth members clearing brush at a local park during Day of Caring in Sept. 2018.

GREATER OTTAWA COUNTY UNITED WAY STAFF

Patrick Moran, President

Lisa Bassage, Administrative Assistant & Data Processor

Jacquelyn Bennett, Students Live United Program Coordinator

Jennifer Bryant, Campaign Associate

Liz DeLaLuz, Vice President of Community Impact

Hillary Hovinga, Director of Marketing and Communications

Erin Kamphuis, Finance Associate

Kelly Kean, Chief Financial Officer

Shannon LaHaie, Vice President of Volunteer Engagement

Tracy Plummer, Vice President of Development

Lyn Raymond, Director of the Lakeshore Housing Alliance

Alexa Redick, Development Associate

Louann Werksma, Director of Major Gifts and Planned Giving

www.OttawaUnitedWay.org



Greater Ottawa County
United Way
115 Clover St., Suite 300
Holland, MI 49423
616.396.7811

